



---

# DD122EA CLASSIC

---



FOR MORE LANGUAGES, PLEASE VISIT:

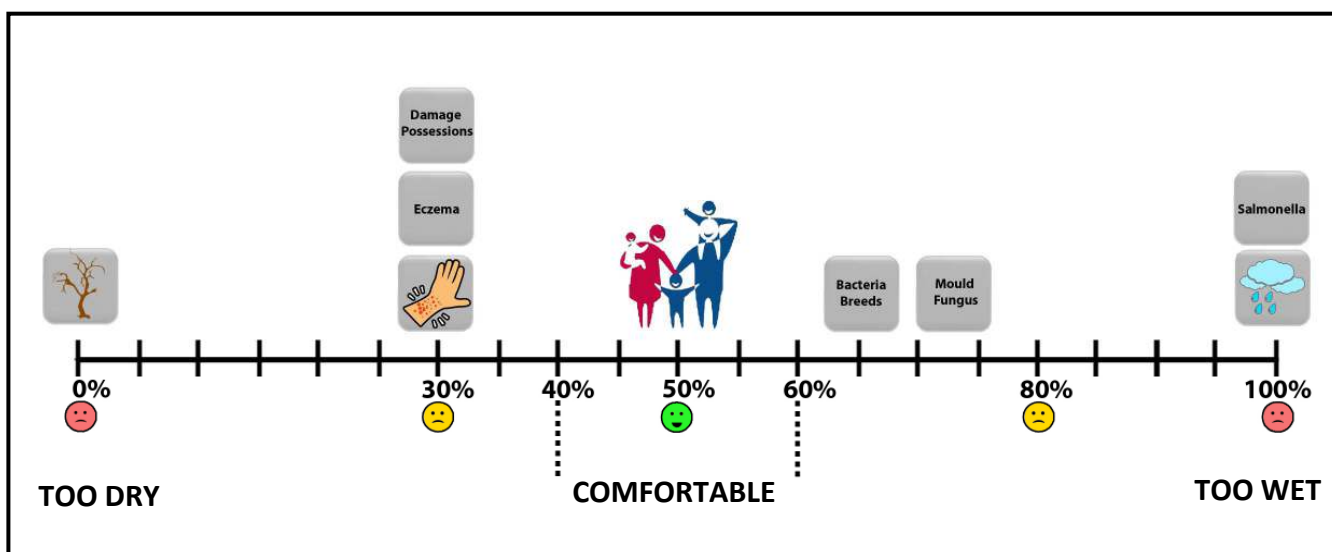
**[www.ecoseb.com/userguide](http://www.ecoseb.com/userguide)**

Thank you and congratulations for choosing an EcoSeb dehumidifier to help you improve the air quality within your home. Inside you will find many helpful tips on how to use and maintain your dehumidifier efficiently. Just a little preventative care can save you money and prolong the life of your dehumidifier.

The purpose of the dehumidifier is to remove the excess moisture in the air by detecting the humidity level in the room. By keeping humidity within recommended levels, a dehumidifier combats household damp, mould and mildew. Dehumidifiers can help to reduce the symptoms of asthma, allergies, and other respiratory health conditions. They can also be used to help dry laundry quicker and control moisture-based damage (such as the aftermath of flooding, leaks or rising damp) to valuable belongings and furniture.

## HUMIDITY GUIDE

There will always be water vapour in the air. The water vapour (or commonly known as moisture) in the air is measured in % Relative Humidity (RH). RH is the ratio of the actual amount of water vapour in the air to the amount it could hold when saturated expressed as a percentage. Too much or too little moisture in our homes can be unhealthy and uncomfortable. The optimum humidity level is between 40% and 60% (RH) where we feel most comfortable.



## LOW HUMIDITY

Low humidity indoors causes excess drying which can trigger skin irritations such as eczema, chapped skin and dry nose. It can also damage possessions, such as wooden furniture, musical instruments and artwork by drying it out too much.

## HIGH HUMIDITY

High humidity indoors causes damp and condensation. The damp left by condensation can damage plaster, wall paper, furniture, vehicles, timber windows, doors and clothes. It can be harmful to our health when bacteria thrives, causing mould and fungus.

## MAINTAINING SAFE LEVELS OF HUMIDITY

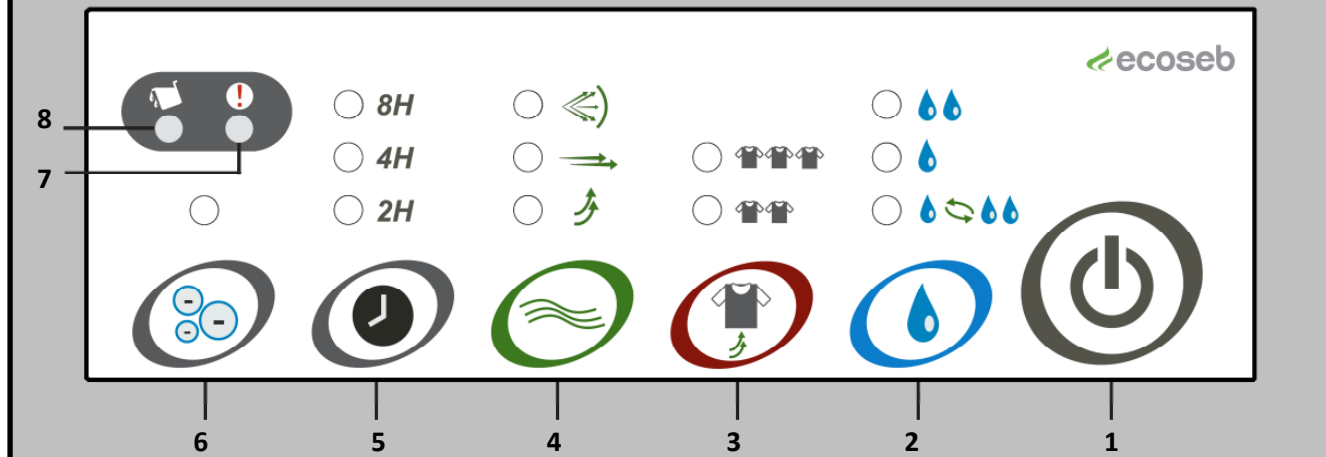
It is important to maintain a consistent humidity range to preserve furniture, paintings, door and window frames. High humidity causes swelling, corrosion, softening of glues and paint. Low humidity causes shrinking, cracking, warping of wood surfaces and gaps in joints, doors and windows. Frequent changes in humidity levels can accelerate damages to property and belongings.

## CONDENSATION

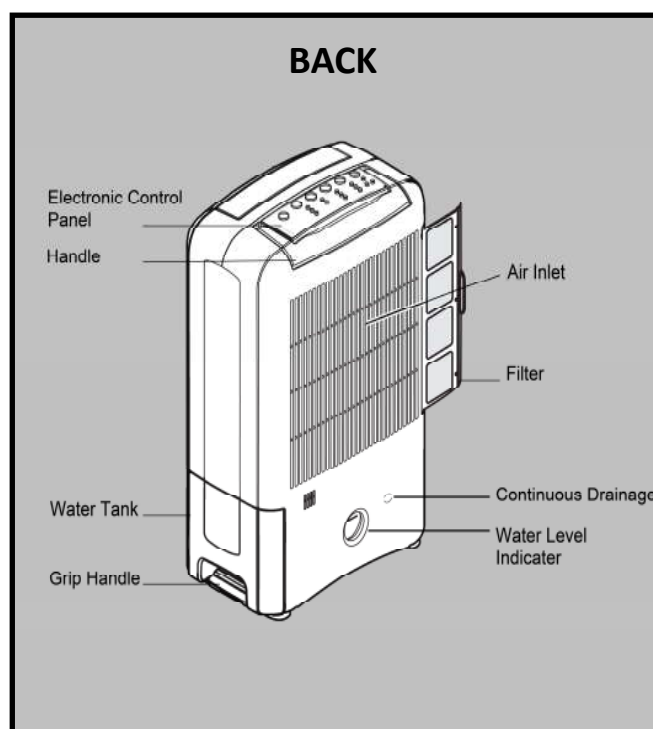
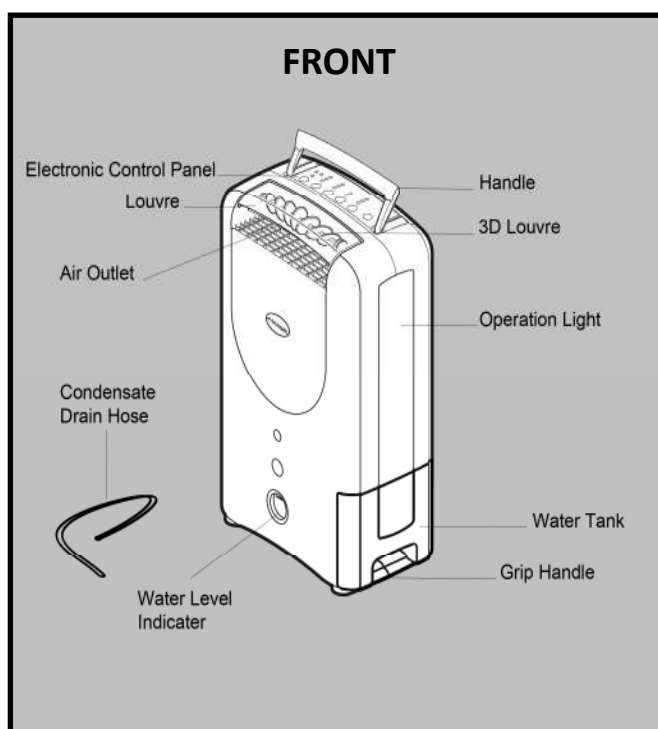
The warmer the air, the more moisture the air can hold than colder air. So, when the air inside the house becomes colder, the moisture contents in the air becomes saturated, and gets heavier resulting in moisture concentration on the coldest parts of the house particularly on the windows, bathroom mirrors and walls. This is condensation, caused by a sudden increase in humidity, cooking, showers, drying clothes, inadequate ventilation and poor thermal insulation.

Condensation does not disappear instantly even with the dehumidifier on. Where excessive condensation appears for example, on your windows, you may want to open your windows to expel the excess humidity for several minutes. It will take a while for the condensation to generally increase the humidity in the room. Once the humidity level in the room around the dehumidifier is increased above the level you have set on the dehumidifier, it will then begin the dehumidification process.

## CONTROL PANEL



1. **Power Key** - Turn unit on **ON/OFF**.
2. **Dry Mode** - Select from **AUTO** or **ECONOMY** or **HI** settings.
3. **Laundry Mode** - Select from **NORMAL** or **TURBO** modes.
4. **Louvre Setting Control Key** - Select from **UP** **FRONT** **WIDE** or **HOLD**.
5. **Timer Key** - Select from **2** or **4** or **8** hours' timer on.
6. **Ionizer Key** - Select **IONIZER** for cleaner air.
7. **Check Indicator** - Indicator lights up when the unit needs attention.
8. **Water Full Indicator** - Indicator lights up when the water tank is full or incorrectly installed.

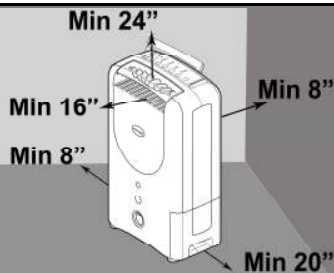


# QUICK START UP

## STEP 1 - WHERE TO POSITION YOUR DEHUMIDIFIER?

Ensure the unit is a safe distance away from a wall or furniture, away from direct sunlight.

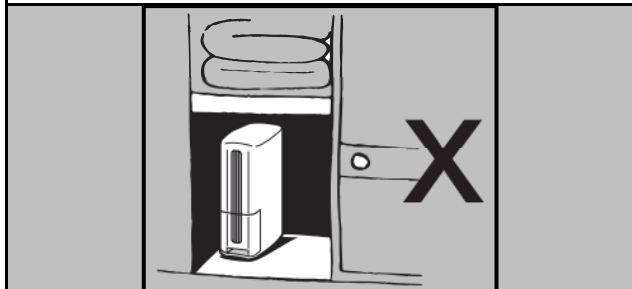
**TIP:** Position the dehumidifier in the dampest room or somewhere central like a landing or a hallway. As long as the internal doors are open the excess moisture from all of the rooms in the house will migrate naturally towards the dehumidifier and be processed.



## STEP 2 - CAUTION - AVOID USING IN



- Small confined area ie. broom cupboard, boiler room, unventilated rooms etc.
- Close proximity to a heat source such as heater, tumble dryer, cooker.
- Dusty or building sites or an industrial environment where particles can clog up the filter or internal components. This will cause the unit to malfunction, voiding your warranty.

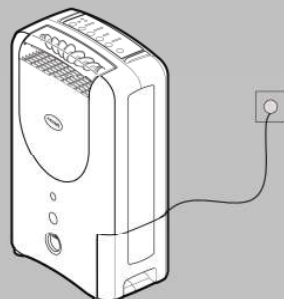


## STEP 3 - ON/OFF



### TO OPERATE UNIT

- Place the dehumidifier in an upright position on an even level surface.
- Plug the dehumidifier into the mains socket.
- Press the ON/OFF button to operate the dehumidifier.
- Now select Mode. (See step 4)



## STEP 4 - DRY MODE



Auto

**Select to keep the room at a comfortable level**

- Toggles automatically to control humidity to 50-60% RH. Optimises energy saving and comfortable humidity level.



Economy

**Select to run in Economy mode**

- The unit dehumidifies in Economy mode and in a quiet setting.
- Use this mode in a daily normal household once the ideal humidity level has been reached. Highly recommended for night use.



Hi

**Select High mode to quickly control high levels of humidity**

- The dehumidifier brings the humidity down to 40-45%RH to control problem areas quickly.

## STEP 5 - LAUNDRY MODE



Use for drying clothes. The dehumidifier will continuously dry the air until you switch to one of the Dry Modes. It typically takes 2 – 4 hours to dry your laundry.



Normal

- Use Normal Laundry mode to dry your laundry at low energy saver operation. Tip: Use during summer time.



Turbo

- Use Turbo Laundry mode to dry your clothes over a shorter period of time or dry a very damp room quickly. Tip: Use during winter time.

**TIP:** Avoid using the Laundry modes for normal daily use. You may use to dry very damp rooms over 2 – 3 days and then switch to the recommended Economy mode.

## STEP 6 - SWING MODE



Select swing for Wide, Front or Up as desired. To hold the swing, press Swing until LED is off.



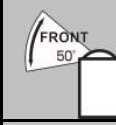
Up

- The automatic louvre swings in an upward range of approx 100°



Front

- The automatic louvre swings in a front range of approx 50°



Wide



- The automatic louvre swings in a wide range of approx 150°



Hold

To hold the swing, press Swing until LED is off.

# QUICK START UP

STEP 6 CONTINUED - 3D LOUVRE	
Wide Air-flow	<ul style="list-style-type: none"> <li>• Rotate to the WIDE position</li> </ul> 
	<ul style="list-style-type: none"> <li>• Rotate to the SPOT position</li> </ul> 
<p><b>Note:</b> To avoid damage, do not touch the louvre whilst in swing mode.</p>	

STEP 8 - IONIZER
<ul style="list-style-type: none"> <li>• Press the "IONIZER" Key to turn the ioniser ON or OFF.</li> </ul>
<ul style="list-style-type: none"> <li>• When the LED is on, the unit releases negative ions from the air outlet to purify the air.</li> </ul>
<ul style="list-style-type: none"> <li>• Negative ions have a normalizing effect on our bodies. Providing the ideal conditions for the body, aiding breathing and relaxation.</li> </ul>
<p><b>TIP:</b> Whilst the dehumidifier is running, turning on the ioniser effectively purifies the air with negative ions and silver ion filtration.</p>

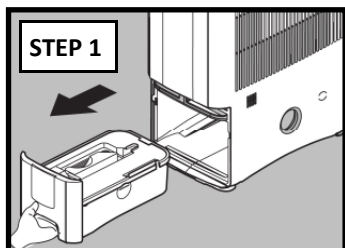
USEFUL INFORMATION
<ul style="list-style-type: none"> <li>• After turning the dehumidifier OFF using the ON/OFF button, the fan will continue to run for a two minute period. This is a normal procedure and helps to cool &amp; protect the internal components. During this two minutes <b>DO NOT</b> remove the power plug from the power socket; wait for the fan to stop running.</li> </ul>
<ul style="list-style-type: none"> <li>• When you first use your dehumidifier it will work harder to reduce the room humidity to it's target of i.e. 50-60%RH (on Auto mode), this is the time when it will produce the most water and need emptying most frequently. As the room becomes drier the dehumidifier collects less water and runs at a lower fan speed.</li> </ul>

STEP 7 - TIMER
<p>Press the "TIMER" Key to select your desired running time</p>
<p><b>2H</b> 2 Hours</p> <ul style="list-style-type: none"> <li>• The unit will automatically switch off at the end of the selected time period.</li> </ul>
<p><b>4H</b> 4 Hours</p> <ul style="list-style-type: none"> <li>• As the time counts down the LED lights will indicate the time remaining.</li> </ul>
<p><b>8H</b> 8 Hours</p> <ul style="list-style-type: none"> <li>• When no "TIMER" is set (the LED is off), the unit will run based on the mode you have selected.</li> </ul>

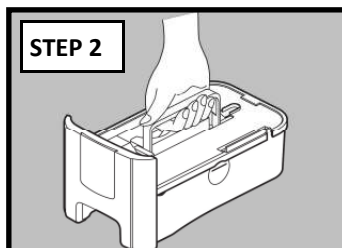
STEP 9 - CHECK LIGHTS
<p><b>Water Full Indicator</b></p> <ul style="list-style-type: none"> <li>• Lights up when water tank is full or not properly inserted.</li> </ul>
<p><b>Check Indicator</b></p> <ul style="list-style-type: none"> <li>• Filter needs cleaning.</li> <li>• Dehumidifier needs to cool down. Switch OFF and leave for 30 minutes and turn on again. This is normal.</li> <li>• In low humidity or temperature conditions.</li> <li>• In high temperature condition over 104°F or low temperature below 34°F</li> </ul>
<p><b>TIP:</b> When the check light comes on, remove the plug from the socket. Move the unit to another room after it cools down or when conditions allows, follow Steps 1 and 3.</p>

USEFUL INFORMATION
<ul style="list-style-type: none"> <li>• When you first use the dehumidifier and periodically thereafter you may notice a smell coming from the dehumidifier. This is caused by the Zeolite desiccant material and is NOT a sign that the dehumidifier is faulty, nor is it harmful to humans or pets. Odour will reduce gradually, this is normal. Ventilate the room if necessary to reduce the odour.</li> </ul>
<ul style="list-style-type: none"> <li>• The Zeolite absorbs odours from items such as cigarettes, cosmetics, hair sprays, building materials and new furniture and then when the desiccant is heated the smell is discharged into the room. (This smell has been described as being like a burning smell or a sour smell). This is normal and will NOT last long, nor is it a sign of a fault.</li> </ul>
<ul style="list-style-type: none"> <li>• Once the power is restored after a power failure, the dehumidifier will continue to operate at the selected settings prior to the power failure.</li> </ul>

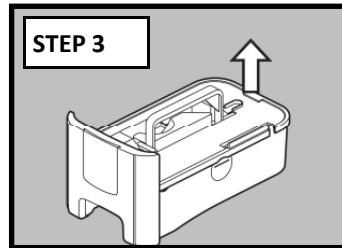
## EMPTY WATER TANK



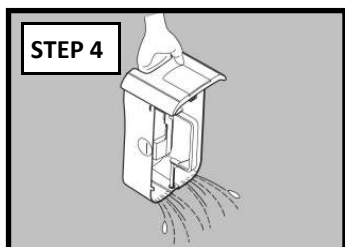
Pull water tank out



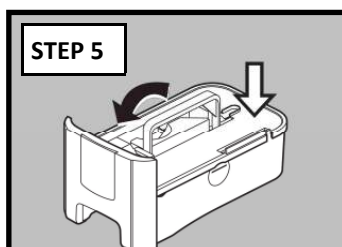
Lift by the handle



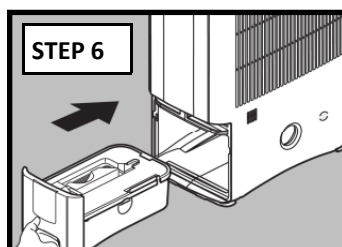
Remove the cover



Pour the water away



Restore the cover and the handle



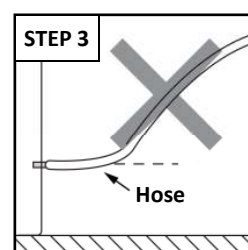
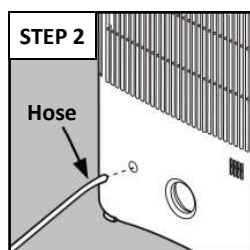
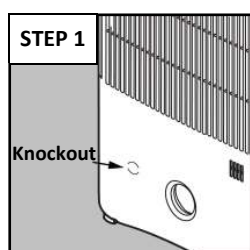
Insert the water tank

1. The Water Full Indicator lights up when the water tank is full and the unit stops operating in a few minutes.
2. Do not move the unit or remove the water tank when the dehumidifier is still running, as water may leak; causing damages to the dehumidifier or an electric shock.
3. Before removing the water tank leave the unit to stand for approximately 10 minutes to ensure all water collected drips into the water tank.
4. To remove the water tank, pull it out gently by gripping the bottom of the water tank, and lift carefully by the handle.
5. Remove the cover of the water tank, then pour the water away. Clean the water tank, restore the cover and handle.
6. Insert the water tank back into to the correct position.

### NOTE :

- Clean the water tank with clean water if needed. Do not use detergent, solvent, abrasive or hot water to avoid damaging the dehumidifier.
- Do not remove or damage the float in the water tank or the unit will not operate properly.
- The Water Full light indicator illuminates if the water tank is not correctly in position.
- Do not tilt the dehumidifier when removing the water tank.

## CONTINUOUS DRAINAGE



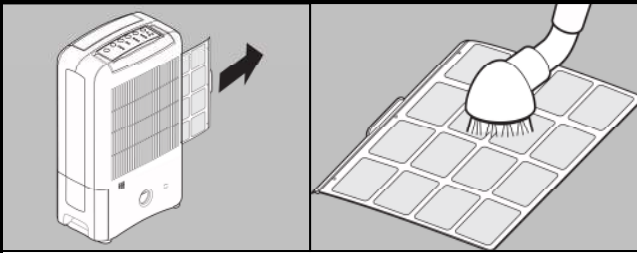
You may use a hose with an inner diameter of 7/16" for continuous drainage:

1. Use a screwdriver to remove the knockout at the back. Attach the hose to the connector through the hole.
2. The hose must lead to an appropriate drain at a downward slope with no sharp bends.

### NOTE:

- Ensure the water tank is well fitted in position before inserting the hose.
- Before removing the water tank, ensure that the hose is disconnected.

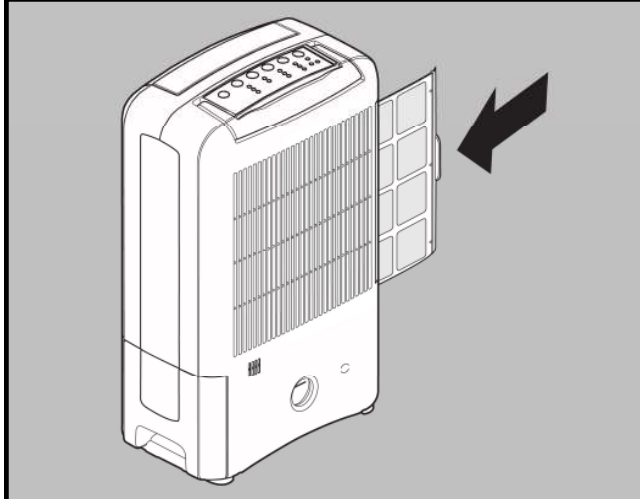
## STEP 1 - CLEANING YOUR FILTER



1. Turn OFF the dehumidifier and remove the filter from the unit.
2. Clean the filter with a brush or vacuum cleaner. (Washing will weaken the germicidal effect of the filter).
3. Replace the filter back into position.
4. If the filter is covered with dust, the airflow and the performance of the dehumidifier will be affected. Check the filter periodically to ensure all dust is removed.

**Tip:** Clean your filter every 2 weeks to keep your air clean and prolong the life of your dehumidifier. The frequency will depend on conditions of operation.

## STEP 2 - REPLACING YOUR FILTER

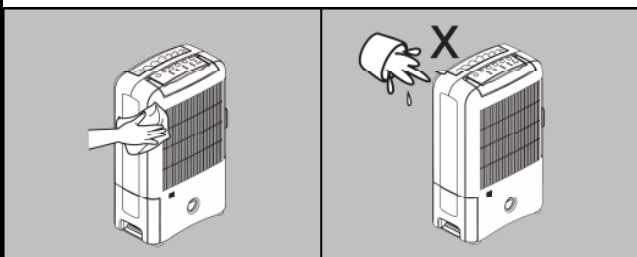


It is recommended that the filter is replaced every 1 - 2 years for optimal performance and hygiene standards. The frequency depends on the duration and conditions of operation. To purchase a replacement filter please visit

[www.ecoseb.com](http://www.ecoseb.com)

## STEP 3- CLEANING YOUR DEHUMIDIFIER

1. Turn the dehumidifier OFF, wait for the fan to stop and unplug the unit from the socket.



2. Clean the surface with a soft damp cloth.
3. Dry thoroughly with a towel after cleaning.
4. Empty the water tank by sliding out from the side. Allow water tank to drip dry or dry with a cloth.

**Caution:**

- Do not wash the unit or immerse in water.
- Do not let water drip into the air inlet or outlet.

## STEP 4 - STORING YOUR DEHUMIDIFIER

1. Turn OFF the dehumidifier , wait for the fan to stop and unplug the dehumidifier from the power socket.
2. Leave the dehumidifier to drain for approximately one day. Clean and dry the water tank.
3. Clean the filter and the dehumidifier. Cover the unit to prevent it from gathering dust. Store upright in a cool dry place.
4. Do not expose to direct sunlight.

# IMPORTANT SAFETY INSTRUCTIONS

**PLEASE READ ALL INSTRUCTIONS CAREFULLY BEFORE OPERATING.**

**WARNING!** This dehumidifier is intended for domestic and light office use only. Any other use is not recommended by the manufacturer and may cause fire, electrical shocks or other injuries to person or property.

**When using electrical appliances, basic safety precautions should always be followed:**

1. Do not operate the dehumidifier where there is a damaged cord or plug or after it malfunctions or it has been dropped or damaged in any way. Arrange for the dehumidifier to be examined or repaired by an authorised technician.
2. Always keep the dehumidifier in an upright position to avoid any damage. Place the dehumidifier on an even level surface during operation.
3. Ensure the household voltage matches the rated specification for the dehumidifier before use.
4. Operate this dehumidifier in an ambient temperature between 34°F and 95°F.
5. Ensure that the air inlets and outlets are not blocked or covered. Do not insert fingers or any objects into the air inlet or outlet openings.
6. Do not place the unit too close to curtains or other objects, keep minimum distance of 8".
7. When using the "LAUNDRY" mode to dry wet clothes efficiently, keep the laundry at a safe distance from the dehumidifier to prevent water from dripping onto the dehumidifier.
8. Never place anything on top of the dehumidifier and do not cover while in use or before it cools down.
9. To protect against electrical shocks, do not immerse or spray the dehumidifier or any of its parts in water.
10. Never unplug the power cord without switching OFF the dehumidifier first.
11. Always unplug the dehumidifier when not in use or when moving location. To disconnect the dehumidifier from the power supply, grip the plug and pull from the power socket. Never pull by the cord.
12. Always empty the water tank before storing the unit away.
13. Close supervision is necessary when the dehumidifier is used in the presence of children and pets.
14. Do not run power cord under carpeting, or cover with rugs or runners. Arrange the cord away from areas where it may become a tripping hazard.
15. Never operate or store the dehumidifier in direct sunlight.
16. Repairs must be carried out by an authorised technician, failure to do so may cause damage to the dehumidifier or injury to persons or property and void the warranty. Always insist on original spare parts.
17. Avoid the using of an extension cable as they may overheat and cause a risk of fire.
18. Do not use the dehumidifier without the air filter. Clean or replace the air filter regularly.
19. Dispose of the water collected from the dehumidifier, this water is not drinkable.
20. Do not leave the dehumidifier unattended in continuous drainage over a long period of time.
21. At the end of its working life dispose the dehumidifier responsibly, in accordance with local by laws.
22. Do not remove the water tank when running, this may cause water to leak.
23. This dehumidifier is equipped with a safety tip-over technology switch. If the dehumidifier is tipped over it will automatically switch off.



This dehumidifier is not intended for use by persons (including children) with reduced physical, sensory or mental capabilities, unless they have been given supervision or instruction concerning use of the dehumidifier by a person responsible for their safety. Children should be supervised to ensure that they do not play with the dehumidifier.

**READ & SAVE THESE IMPORTANT SAFETY INSTRUCTIONS FOR FUTURE REFERENCE**



# TROUBLESHOOTING

CHECK THE FOLLOWING POINTS BEFORE CONTACTING TECHNICAL SUPPORT.

PROBLEM	REASON	SOLUTION
No Power	Dehumidifier is not plugged in or there is no power supply	Plug the dehumidifier into mains and switch plug ON Check the main power supply
 Check Light On	Filter clogged	Check and clean or replace the filter
	The air inlet or outlet is blocked or covered	Remove obstructions
	Low humidity condition	Switch off unit and move to another room
 Water Full Light On	Water tank is full or installed incorrectly	Empty water tank or re-install correctly
	Water float out of position	Restore water float back into position
Water Leaking	Dehumidifier on uneven surface or water tank fitted incorrectly	Ensure the dehumidifier is on a flat, even surface, use a spirit level to check, remove tank and replace correctly
	Filter clogged	Clean or replace filter
	Damaged water tank	Remove the water tank, fill with water and place on a hard even surface to test for leakage
	The continuous drainage is clogged or loose	Check the continuous drainage hose and its connection
Not Collecting Water	Set humidity is reached	Readjust the humidity settings
	Room is very cold or very dry for the current settings	Readjust the humidity setting or increase the room temperature Check room temperature and humidity levels
	Filter dusty	Clean the air filter or replace it
	Dehumidifier set up incorrectly	Ensure unit is set up correctly (Quick Start Up)
	Room Temperature is too hot Room Temperature is too cold	Open the window or door to ventilate Increase heat in the room
Noisy	Water tank or filter fitted incorrectly	Check and refit the water tank or filter Check unit is on an even level surface

## ECOSEB TECHNICAL SUPPORT

[www.ecoseb.com/support](http://www.ecoseb.com/support)

## SPECIFICATIONS

MODEL	DD122EA CLASSIC
Temperature Range	34°F ~ 104°F
Dehumidification Extraction Rate	15 pints/day (7 litres) (68°F, 60%RH)
Water Tank Capacity	4.2 pints
Voltage	110 - 120V~60Hz
Net Weight	13.2 lbs
Gross Weight	15.4 lbs
Net Dimension (W x H x D)	11.4" x 18.7" x 6.9"
Gross Dimension (W x H x D)	13.8" x 21.7" x 9.1"

## TWO (2) YEAR LIMITED GUARANTEE

### SAVE THIS GUARANTEE INFORMATION

**EcoSeb Inc.** guarantees this product free from defects in materials and workmanship for a period of Two (2) years from the date of purchase. Coverage is valid only with proof of purchase.

Exclusions: This guarantee does not cover:-

- Products used in the conditions other than the settings recommended and at the voltage indicated.
- Products used in a commercial setting or dusty environment.
- Service which do not involve malfunction or defects in materials or workmanship or those used other than in accordance with provided instructions.
- Appliance acquired second hand.
- Surcharges including, but not limited to, any after hour, weekend or holiday service calls and delivery charges.
- Damages caused by services performed by unauthorized service companies or use of parts other than genuine EcoSeb parts or external causes; such as abuse, incorrect power supply, accidents, fires or acts of God.
- Replacement accessories such as filters.

This warranty is in addition to, and does not affect, your Statutory Rights.

We recommend that you note the details of your purchase below and retain your original proof of purchase receipt with this user guide. Keep these documents safe in the event of a warranty claim.

---

**Date of purchase:**

---

**Retailer Name:**

---

**Serial number:**

This limited warranty only applies in the USA and Canada. EcoSeb, Inc. authorizes no person to change or add to any obligations under this warranty. Obligations for service and parts under this warranty must be performed by EcoSeb, Inc. or an authorized service company. Product features or specification described may be subject to change without notice.

### Disclaimer of implied warranties; limitation of remedies

Customer's sole and exclusive remedy under this limited warranty shall be product repair or replacement as provided herein. Claims based on implied warranties, including warranties of merchantability or fitness for a particular purpose, are limited to two years or the shortest period allowed by law, but not less than two years. EcoSeb shall not be liable for consequential or incidental damages such as property damage and incidental expenses resulting from any breach of this written limited warranty or any implied warranty. Some States and provinces do not allow the exclusion or limitation of incidental or consequential damages, or limitations on the duration of implied warranties, so these limitations or exclusions may not apply to you. This written warranty gives you specific legal rights. You may also have other rights that vary from state to state.



www.ecoseb.com

C166 2015-05